

# Behavioral Health *for Whole Person Care*



⋮

An integrated and  
comprehensive approach  
to complex needs.



nh healthy families™





# Our Behavioral Health Support Programs

NH Healthy families offers our members, providers, and the community programs to support behavioral health wellness. We continue to evolve our programs to address the current needs of our community. Our mission at NH Healthy Families is to *transform the health of the communities we serve, one person at a time.*

## SCREENING, BRIEF INTERVENTION, AND REFERRAL TO TREATMENT (SBIRT)

NH Healthy families developed a SBIRT training for medical providers to help screen, identify, education and refer patients to treatment. This tool supports providers to assist members for prevention and early intervention. Providers can register for this training at: [attendee.gototraining.com/2c781/catalog/8319131840426621184?tz=America/New\\_York](https://attendee.gototraining.com/2c781/catalog/8319131840426621184?tz=America/New_York).

## READY FOR MY RECOVERY (R4R)

R4R is a program for members seeking rewards for engagement in their substance misuse treatment and recovery activities. Members can earn rewards\* once enrolled. Learn more at: [nhhealthyfamilies.com/members/medicaid/resources/handbooks-forms.html](https://nhhealthyfamilies.com/members/medicaid/resources/handbooks-forms.html) and you'll find the brochure PDF under **Programs and Services**.

## WORKFORCE OUTFITTING PROJECT

NH Healthy Families supports wellness through work engagement. A fund was established by NH Healthy Families to be administered through peer recovery centers. Candidates in recovery who are seeking employment can apply for dollars through their affiliated agency. (Some examples are: clothing, footwear, transportation equipment such as bicycles, helmets, bicycle locks, license reinstatement fees, social security card replacement fees).

### DID YOU KNOW?

*NH Healthy Families encourages utilizing evidence based practices and provides care management to assist Members in connecting to community resources.*

**More Programs**



## SUICIDE PREVENTION FEATURING STRONG YOUTH STRONG COMMUNITIES (SYSC)

Strong Youth, Strong Communities (SYSC) is a nationwide initiative designed to support the healthy development of youth and to assist youth-serving organizations. The SYSC events bring together a diverse group of partners to address challenges confronting middle and high school students. This partnership further enhances NH Healthy Families' commitment to empowering youth and creating stronger, healthier communities.

## CERTIFIED RECOVERY SUPPORT WORKER (CRSW) WORKFORCE DEVELOPMENT PROJECT

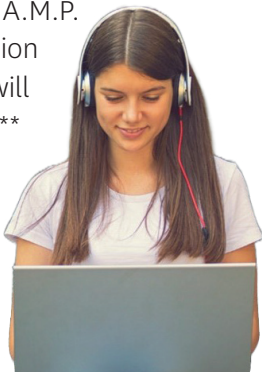
NH Healthy Families has partnered with several New Hampshire providers to sponsor training for individuals who are committed to working with people in early recovery. The Certified Recovery Support Worker (CRSW) Workforce Development Project will build and enhance recovery services workforce capacity throughout the state. The partnership will serve to provide training, professional mentoring and ongoing resource support for up to one year.

## MENTAL HEALTH (MH) C.H.A.M.P.

A MH C.H.A.M.P. is someone who takes action to raise awareness of mental health and challenge stigma. They are committed to promoting good mental health and helping others to do the same. Any action, big or small, that a MH C.H.A.M.P. takes to address and support mental health - helps to end stigma and raise awareness.

Members can get started by completing an online application indicating which of the C.H.A.M.P. action(s) they are taking. Their application will be reviewed and if approved, they will receive a \$20\* My Health Pays® reward.\*\*

More information can be found at [nhhealthyfamilies.com/members/medicaid/benefits-services/mental-health-champion.html](https://nhhealthyfamilies.com/members/medicaid/benefits-services/mental-health-champion.html).



# Behavioral Health Provider Training

Our provider training program is designed to enhance the knowledge, skills and performance of healthcare professionals who empower our members to make positive health behavior changes. We offer many courses to support continuing education, enhance integrated care. Participants may be able to earn continuing education credits and certificates of attendance for meeting licensing requirements.

We routinely update and add new trainings to our catalog so be sure to check out all that we have to offer. We look to our Providers for suggesting helpful topics and how to make our training programs meet the needs for all Provider types.

For more information or to register visit [nhhealthyfamilies.com/providers/resources/Provider-Behavioral-Health-Resources.html](https://nhhealthyfamilies.com/providers/resources/Provider-Behavioral-Health-Resources.html) under the **Behavioral Health Training** drop-down.

For questions or concerns call **1-866-769-3085**.



WE'RE YOUR PARTNERS READY TO HELP:  
1-866-769-3085 • TDD/TTY: 1-855-742-0123 • [NHhealthyfamilies.com](https://nhhealthyfamilies.com)

\*Some restrictions and limitations apply. Each member can earn up to \$250 in cash and non-cash goods and services through June 30 each year.

\*\*For NH Healthy Families members only. All applications will be reviewed by BH clinical team and submission of application does not guarantee reward will be earned.



# Where patients can go for Behavioral Health Care:

## PRIMARY CARE PHYSICIAN (PCP) OR BEHAVIORAL HEALTH PROVIDER

They can call the office to schedule an appointment if they need to be seen, but don't need immediate care.

If they need help finding a PCP or Behavioral Health Provider for themselves or a loved one, they can contact Member Services: **1-866-769-3085**.

## EMERGENCY SERVICES

### **1-866-769-3085 (and follow prompt for Behavioral Health needs)**

This line will connect them to an on-call clinician to support them or connect them to their local behavioral health emergency services including telehealth services.

## 988 SUICIDE & CRISIS LIFELINE

Call, text or chat **988**.

## A LOCAL DOORWAY

For substance misuse needs: Call **211** to be directed to help.

## NH RAPID RESPONSE

Call/Text **1-833-710-6477**. The NH Rapid Response Access Point (NHRRAP) is a 24 hour service for any child, youth, or family in crisis.

They have people who can talk with them or come to see them in person. Learn more about Rapid Response Access Point at **nh988.com**. There are so many things that people may need help with, just reach out and the New Hampshire Rapid Response Access Point will work to guide them.



A STRONGER YOU.  
A STRONGER NEW HAMPSHIRE.

## CHILDREN'S BEHAVIORAL HEALTH RESOURCE CENTER

A State of NH online resource for information and access to services for youth.

**childrensbehavioralhealthresources.nh.gov**

## EMERGENCY ROOM (ER)

Remind them to consider all of their options before going to the ER. Visit the ER for LIFE-THREATENING injuries or illnesses.



**nh healthy families**<sup>™</sup>

2 Executive Park Drive • Bedford, NH 03110  
1-866-769-3085 • TDD/TTY: 1-855-742-0123

**NHhealthyfamilies.com**